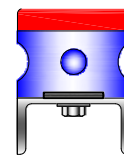


# IMPACT BAR SYSTEM

MODEL : CIB-100/60

MODEL : CIB-100/75

CARESS BELT CONVEYORS  
Replace with **CONCARE** Impact Bars

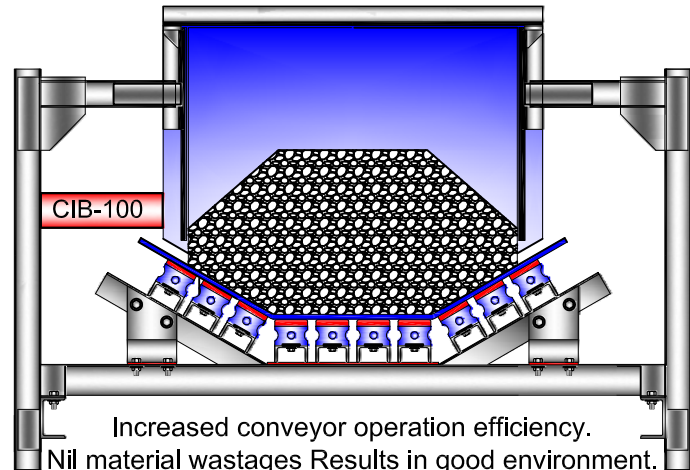
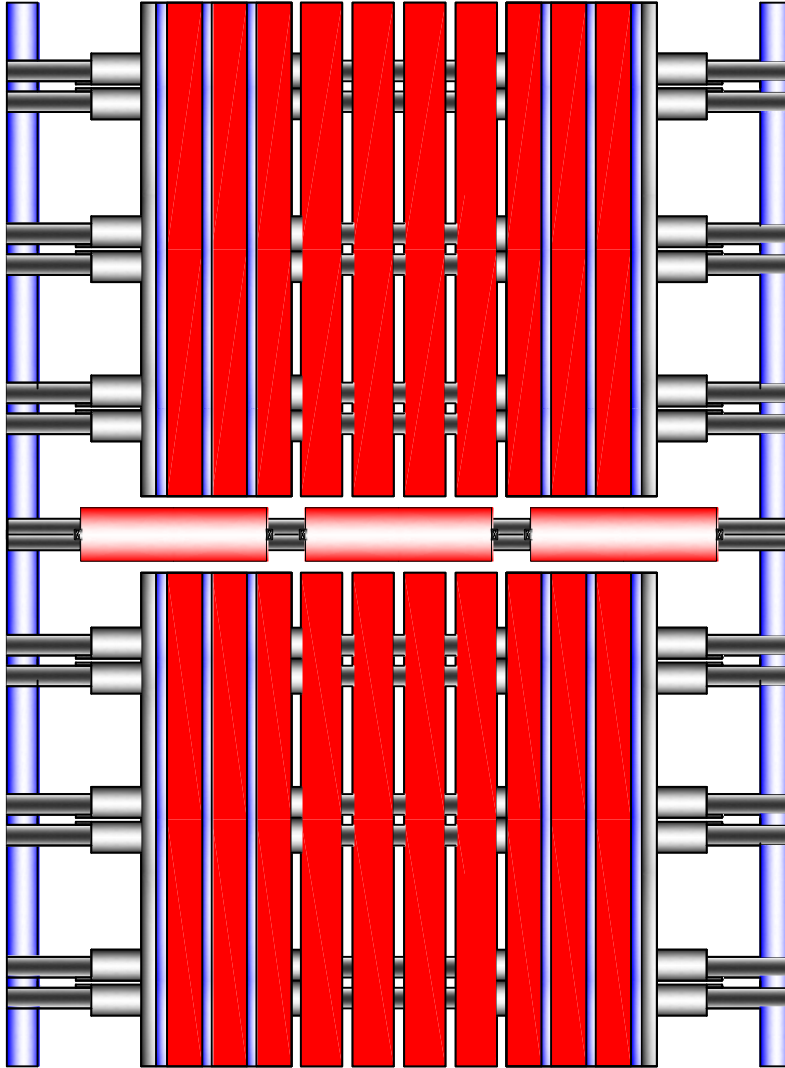


## Specifications.

Uniquely designed concave shape with concentric hole with sturdy steel plate backed Rubber for achieving best possible cushioning, Self lubricating frictionless UHMW-PE Polymer for ensure Drag force.

Belt Conveyors need to run without spillages for better productivity and longer life. The pitch between two adjacent rubber sleeved impact idlers play havoc in the feed zone due to the impingement of larger lumps damaging the unsupported portion of the belt. In FIT and FORGET type impact cradle bar design the belt seats completely. The frictionless top polymer take care of smooth sliding and the uniquely designed rubber layer taking care of cushioned impact.

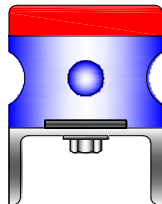
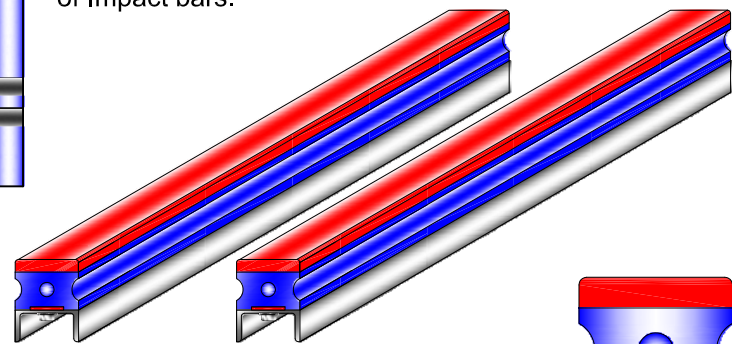
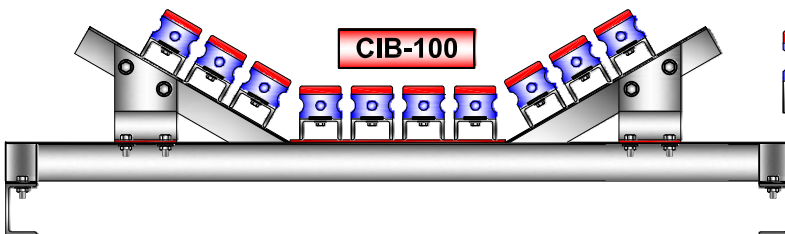
CONCARE CARESS BELT CONVEYORS with impact cradle bars to run the belt spillage free and achieve longer life.



Increased conveyor operation efficiency.  
Nil material wastages Results in good environment.  
Longer belt life.

Sturdy support cradle. Compatible to all trough angles. Cradles offered for Medium and Heavy duty Applications. Impact bars of 60 mm and 75 mm thickness offered for application suitability.

Self lubricating frictionless POLYMER ensure smooth dra force. Uniquely designed RUBBER help in achieving best possible cushioning effect. STEEL backed Impact bars for sturdiness. Steel, Rubber and Polymer layers are long lasting FUSION bonded. Ease of fitment and replacement of Impact bars.



Cost effective Simple to install & Easy to maintain.  
Independent with Effective for sealing efficiency.  
Fit and Forget Type.  
Suitable for all belt widths & speeds  
Suitable to Uni & Bi Direction belts only.

Model	Polymer	Rubber	Length	
CIB 100/60	20 mm	40 mm	1000 mm	1300 mm
CIB 100/75	20 mm	55 mm	1000 mm	1300 mm

Head Office & Works

Caress Belt Conveyors by **BMH CONCARE TECHNOLOGY INC.**

Plot no. 56, Sector-1, Service Industrial Area, Nerul (East), Navi Mumbai - 400 706 India.

Phone :- 022 27702626 / 3258 4616 / 09324297633 / 09324383067

Fax :- 022 27702625. E-Mail :- [bmhsales@bmhconcare.com](mailto:bmhsales@bmhconcare.com) / [bmhprojects@bmhconcare.com](mailto:bmhprojects@bmhconcare.com)

**A REVOLUTION IN  
ENVIRONMENTAL ENGINEERING**

**BMH / CIB-100/014**